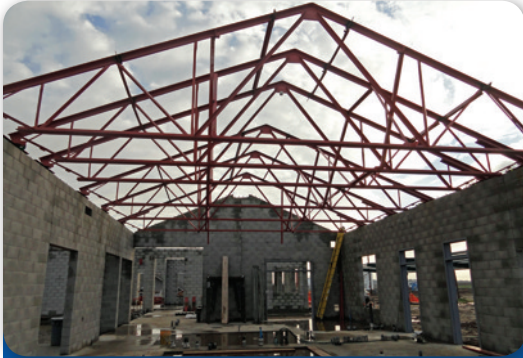


Delta Water Supply Project

January 2011 Construction Update



Key Activities At-a-Glance

Construction efforts continue during winter months:

- Installed various vertical pumps throughout water treatment plant site
- Completed shotcrete of slopes for solids drying basin
- Completed masonry work at the maintenance building
- Finalized various site piping activities
- Completed inspection of 54" Honker Cut tunnel pipe
- Completed remaining portion of pipeline to tie in to water treatment plant



Water Treatment Plant Progress

Highlights include:

- Installed baffle walls and plate settlers for flocculation/sedimentation basin and electrical for the flocculation mixers
- Installed bent plates and trusses at administration/operations building
- Installed underground electrical for the solar system at the administration/operations building
- Completed inside of treated water storage tank
- Commenced work on the Woodbridge Irrigation District diversion structure



Intake Facility Construction Update

Contractors began waterside fill placement; continued settlement monitoring; continued excavation of the Intake Cell; and began driving upper roadway steel piles.



Pipeline and Tunneling Work Continues

Highlights include:

- Relocated PG&E gas service line at Eight Mile and N. Davis Roads due to a 54" pipe conflict
- Installed header system to carry dewatering water from various points of pipeline construction along Eight Mile Road
- Finalized treated water casing pipe and carrier pipe installation at Union Pacific Railroad Crossing
- Completed risers and backfill activities at Honker Cut east and Pixley Slough north tunnels

Road Work and Traffic Impacts

Construction activities continue along Eight Mile Road between Davis Road and Interstate 5 and also between Interstate 5 and Empire Tract Road. Motorists are reminded to be aware of trucks entering and exiting the roadway.

Intermittent traffic controls remain in effect at North Davis and Eight Mile Roads as pipeline construction activities continue. Motorists are encouraged to adhere to posted traffic signs and use caution in wet and foggy weather. Please notify the project team with questions or concerns by calling the traffic hotline or posting a comment on the website.

Traffic controls will be in effect starting February 2011 through April 2011 along Eight Mile Road near Interstate 5 and Trinity Parkway. You may experience delays in the area. Please allow yourself plenty of time when traveling through the area.

Financial Update

The following is a summary of estimated project costs, along with expenditures through the end of December 2010.

	Cost Estimate*	Spent to Date	Balance
Design & Construction (Intake):	\$25,900,168	\$9,512,833	\$16,387,335
Design & Construction (Plant & Pipelines):	\$171,557,071	\$109,426,051	\$62,131,020
Indirect Costs**:	\$19,902,474	\$18,632,779	\$1,269,695
TOTALS:	\$217,359,713	\$137,571,663	\$79,788,050

*Based on Financing Plan presented to Stockton City Council and Public Financing Authority July 28, 2009.

**Includes project administration, permitting, acquisition and other services.

1-877-711-5169

www.deltawatersupplyproject.com

Stay Informed!

The project hotline is updated weekly with traffic control information. Visit the website for photos, map, project highlights and traffic updates.



**City of Stockton
Delta Water Supply Project**

11373 N. Lower Sacramento Road
Lodi, CA 95242
(209) 937-8762
(209) 365-4638 (fax)

**TOLL FREE HOTLINE:
1.877.711.5169**

deltawatersupplyproject.com