

Delta Water Supply Project

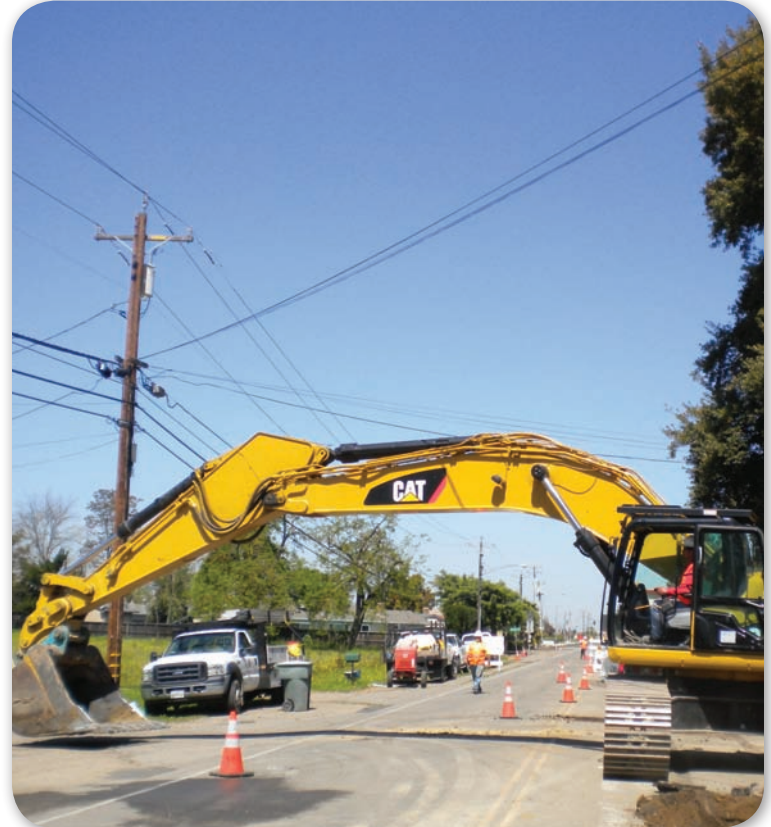
May 2010 Construction Update



Water Treatment Plant Construction Underway

Recent progress includes:

- Installation of rebar and pouring of concrete for the pump station walls
- Formation of base slab and installation of piping under the slab for the flocculation and sedimentation basin
- Mobilization of subcontractor to begin work on treated water storage tank
- Mobilization of yard piping subcontractor
- Installation of storm drain system



Pipeline Construction Activities Continue

Contractors continued to install the 36" treated water pipeline along South Davis Road. Additional deliveries of the 54" raw water pipeline took place along Eight Mile Road east of Interstate 5.

Traffic Safety

A construction project of this magnitude requires extra care of those traveling in and around the construction zone. Please be aware of large trucks entering and exiting the construction site and nearby roadways. Also, please adhere to traffic controls and travel at the posted construction speed limit.

We encourage the community to be our eyes and ears on the roadway. If you see unsafe conditions, notify the project team by calling the traffic hotline at 1-877-711-5169 or posting a comment on the project website at deltawatersupplyproject.com.



Upcoming Activities

Water treatment plant construction activities will continue on the pump station and flocculation and sedimentation basin. Work will also begin on the 4.0 million gallon treated water storage tank. Pipeline installation will continue along Eight Mile Road between Davis Road and Interstate 5. Pipeline activities will commence on Empire Tract and preliminary site work will begin on the Intake and Pump Station Facility.



Stay Informed!

The project hotline is updated weekly with traffic control information. Visit the website for photos, a project map, and traffic and construction updates.

1-877-711-5169

www.deltawatersupplyproject.com

Financial Update

The following is a summary of estimated project costs, along with expenditures through the end of April 2010.

	Cost Estimate*	Spent to Date	Balance
Design & Construction (Intake):	\$25,900,168	\$2,716,342	\$23,183,826
Design & Construction (Plant & Pipelines):	\$171,557,071	\$31,432,067	\$140,125,004
<i>Indirect Costs:</i>			
Project Administration:	\$4,624,279	\$2,622,528	\$2,001,751
Permitting:	\$3,781,343	\$2,762,413	\$1,018,930
Acquisition & Right-of-Way:	\$5,844,908	\$4,892,093	\$952,815
Other Services:	\$5,651,944	\$5,218,795	\$433,149
TOTALS:	\$217,359,713	\$49,644,238	\$167,715,475

**Based on Financing Plan presented to Stockton City Council and Public Financing Authority July 28, 2009.*

Want to See the Project Site?

Call Melissa Price at 209-937-8782 or email Melissa.Price@ci.stockton.ca.us to schedule a tour.



City of Stockton

Delta Water Supply Project

2500 Navy Drive
Stockton, CA 95206

(209) 937-8762

(209) 937-8698 (fax)

TOLL FREE HOTLINE:

1.877.711.5169

deltawatersupplyproject.com